

*Aero*



L-39 Skyfox

BRAND-NEW, EFFICIENT, AND RELIABLE PLATFORM SUITABLE FOR TRAINING, RECONNAISSANCE, AND LIGHT ATTACK MISSIONS



### BRAND NEW L- 39 SKYFOX

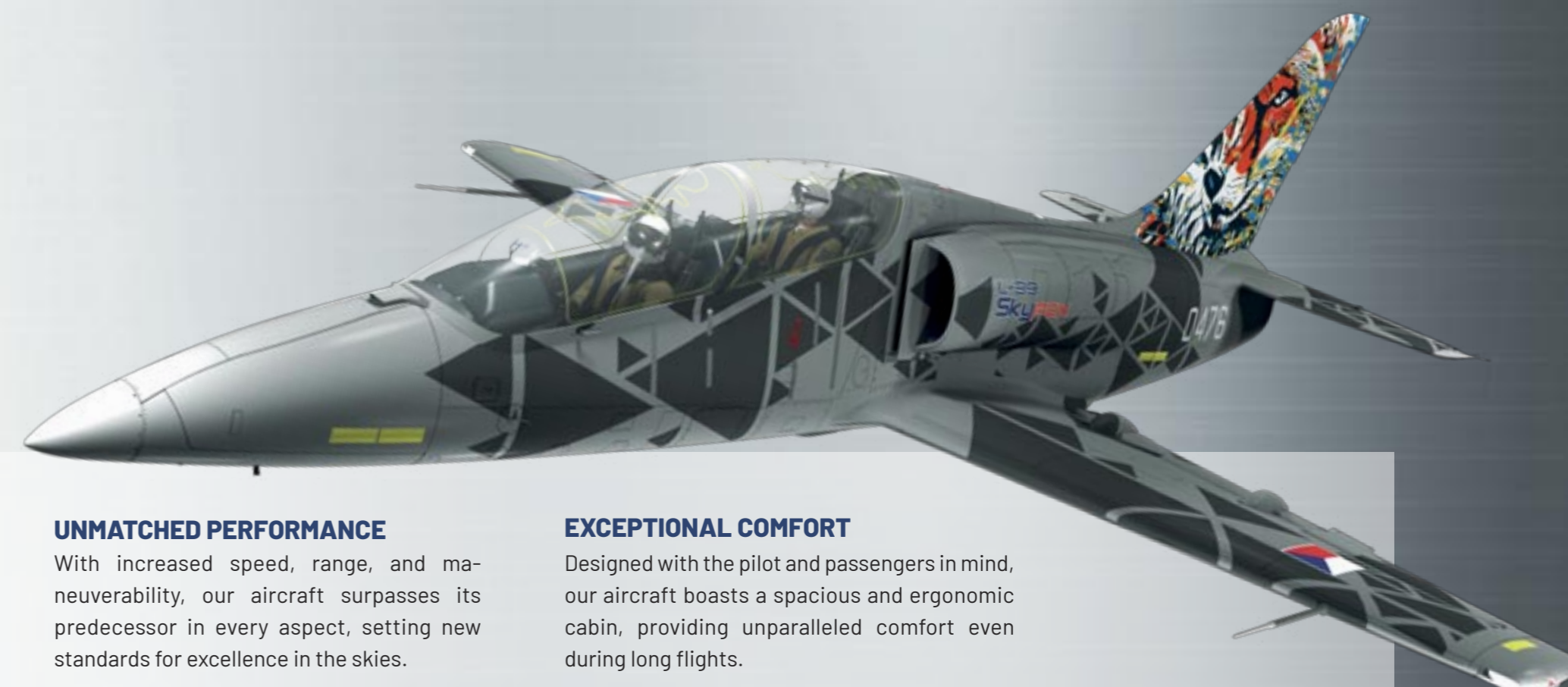
We are thrilled to present our latest achievement in aviation engineering: the newly designed and developed aircraft, embodying the essence of innovation while honoring the timeless legacy of its predecessor, the legendary L-39 Albatros.

#### PROVEN RELIABILITY AND SAFETY

Building on the renowned reliability of the L-39 Albatros, our aircraft features a rugged airframe designed to withstand the most demanding conditions. The reinforced canopy and the Martin-Baker ejection seat further enhance overall safety, providing superior protection for student pilots throughout every phase of training.

#### INNOVATIVE DESIGN

Our team of engineers has meticulously crafted every aspect of the aircraft, ensuring optimal aerodynamics, stability, and efficiency.



#### UNMATCHED PERFORMANCE

With increased speed, range, and maneuverability, our aircraft surpasses its predecessor in every aspect, setting new standards for excellence in the skies.

#### STATE-OF-THE-ART TECHNOLOGY

Equipped with the latest avionics systems and navigation aids, our aircraft offers unparalleled precision and control.

#### EXCEPTIONAL COMFORT

Designed with the pilot and passengers in mind, our aircraft boasts a spacious and ergonomic cabin, providing unparalleled comfort even during long flights.

#### BEST IN CLASS OPERATIONAL COSTS

Aircraft combines a highly economical engine with simplified maintenance, ensuring the lowest flight hour and maintenance costs in its class. Designed for efficiency, it offers exceptional performance with minimal upkeep.

**L-39SKYFOX TRAINER CONFIGURATION**

- 2 x 2 MFDs Genesys IDU-680
- FJ44-4M turbofan engine
- Martin Baker 0-0 ejection seat
- HUD
- HOTAS
- UHF/VHF communication system
- Jeppesen navigation database
- Air data computer

- Embedded virtual training system (VTS)
- Ground based training systems (GBTS), including CPT, FMS
- External fuel tanks (350 l)
- NVG compatible
- Traffic avoidance system (TAS)

**L-39 SKYFOX WESTERN LIGHT ATTACK CONFIGURATION**

- 5 hard points for variety of weapons and payloads
- Capable to carry both basic and smart weapons
- Air-to-air capability against slow and low moving targets
- Air-to-ground capability for close air support and asymmetric conflicts

**L-39 EASTERN LIGHT ATTACK CONFIGURATION**

- Border & maritime patrolling
- EO/IR & radar ISR capabilities
- JTAC & CAS
- Detection and elimination of slow and low flying objects

**L-39SKYFOX SPECIAL MISSION AIRCRAFT**

- Border & maritime patrolling
- EO/IR & radar ISR capabilities
- JTAC & CAS
- Detection and elimination of slow and low flying objects

**SENSORS FOR L-39SKYFOX SPECIAL MISSION AIRCRAFT**

- EO/IR & radar
- Cell / Satellite phone detection system (SIGINT)
- Infrared search and track system (IRST)(eg.: Leonardo SKYWARD)
- Self-protection system POD

**FLIGHT AND TACTICAL TRAINING**



**CAS & LIGHT ATTACK CAPABILITY**



**AIR PATROLLING AND RECONNAISSANCE**



**REQUIREMENT**

The best-trained pilots should command the skies

Celestial space always must be protected

Not even a bird can slip across the border

**L-39 SKYFOX MISSION CAPABILITIES SOLUTION**

▶ **Flight and Tactical Training**

▶ **Light Attack Capability**

▶ **Air Patrolling and Reconnaissance**

THE L-39 ALBATROS: THE WORLD'S MOST SUCCESSFUL TRAINING AIRCRAFT,  
SETTING THE STANDARD FOR EXCELLENCE IN PILOT TRAINING SINCE THE 1980s

*Albatros*



A NEWLY ENGINEERED AIRCRAFT, LEVERAGING CUTTING-EDGE MATERIALS AND TECHNOLOGIES,  
WHILE RETAINING THE EXCEPTIONAL QUALITIES OF ITS PREDECESSOR, THE ICONIC L-39 ALBATROS

**L-39 SkyFOX**



- Shorter and lighter airframe for better flight agility
- Larger wing area for improved stability and handling
- Removal of wing tip fuel tanks for reduced drag
- New one-piece canopy for increased safety
- Elevated back pilot seat for better visibility boosted thrust-to-weight, reduced fuel use, extended range, and improved reliability at lower costs

## MAIN FEATURES



### NEW AIRFRAME

Composite parts  
New wet wing & wing tips  
Life up to 15,000 FH



### NEW COCKPIT

Latest glass cockpit design  
Open architecture with wide customization options  
Embedded Virtual Training system



### FJ44-4M ENGINE

Easy maintenance & long check interval (800 FH)  
TAP Blue program covering scheduled and unscheduled maintenance and FOD  
Low fuel consumption, low noise and heat signature



### STATE OF THE ART SYSTEMS

FCS modified to further enhance maneuverability  
Best in class fuel system with highest range & endurance



### NEW EJECTION SEAT

Martin Baker MK16 – CZ16H "0-0" ejection seats



### PYLONS

5 hard points  
Air-to-air armament  
Air-to-ground armament  
External fuel tanks  
Payload up to 1,650 kg

## PERFORMANCE DATA

Empty weight	<b>3,280 kg</b>
Maximum take-off weight up to	<b>5,600 kg</b>
Internal fuel capacity	<b>1,150 kg</b>
External fuel tanks capacity	<b>570 kg</b>
Maximum speed	<b>490 KCAS</b>
Load factor (G)	<b>+8/-4G</b>
Max range clean	<b>1,060 NM</b>
Max endurance / w external fuel tanks	<b>4h 45m</b>
Max airframe service life	<b>15,000 FH</b>

## COCKPIT CAPABILITIES



# L-39 Skyfox

## FULL GLASS COCKPIT

### HOTAS Throttle Grip & Control Stick

### Digital clock

### Head-up display (HUD)

Head-up display (HUD) is installed in the front cockpit to display flight information and aim simulated or live armament.

### Multifunction MFD/PFD displays (2x)

Multifunction MFD/PFD displays (2x) are in both cockpits, with MFDs type IDU-680P, each 6 x 8 inches.

### Universal management unit (UMU)

Universal Management Unit (UMU) is in both cockpits. The front cockpit has UMU1-K1007, and the rear has UMU1-A1003.

### ESIS backup instrument system

ESIS backup instrument system displays flight data if the main display or avionics fail.

Aero



**FLIGHT AND TACTICAL TRAINING**

The L-39 Skyfox aircraft in training configuration can be used after the screener/primary with its new avionics interface, Genesys IDU 680, improving trainees' skills at Air Education and Training. It also features a sophisticated integrated training system for efficient tactical training of pilots for 4<sup>th</sup> and 5<sup>th</sup> generation fighters.

**COMPREHENSIVE GROUND BASED TRAINING SYSTEM FOR COMPLEX TACTICAL TRAINING**

- Learning management system
- Desktop trainer
- Cockpit procedure trainer
- Full mission simulator
- Mission planning and debriefing system



**KEY ADVANTAGES:**

- Extremely cost-effective training solution
- Simulated weapons delivery
- Enhanced safety
- Reduces training restrictions
- Adaptive training system

**VTS CORE FUNCTIONS:**

- Tactical situation display (TSD)
- Virtual radar display (RDR)
- Data link

**VTS OPTIONAL UPGRADES:**

- Real time ground stations
- Virtual SMS
- Virtual RWR



ONE SYSTEM  
ONE SUPPLIER  
MULTIPLE ELEMENTS

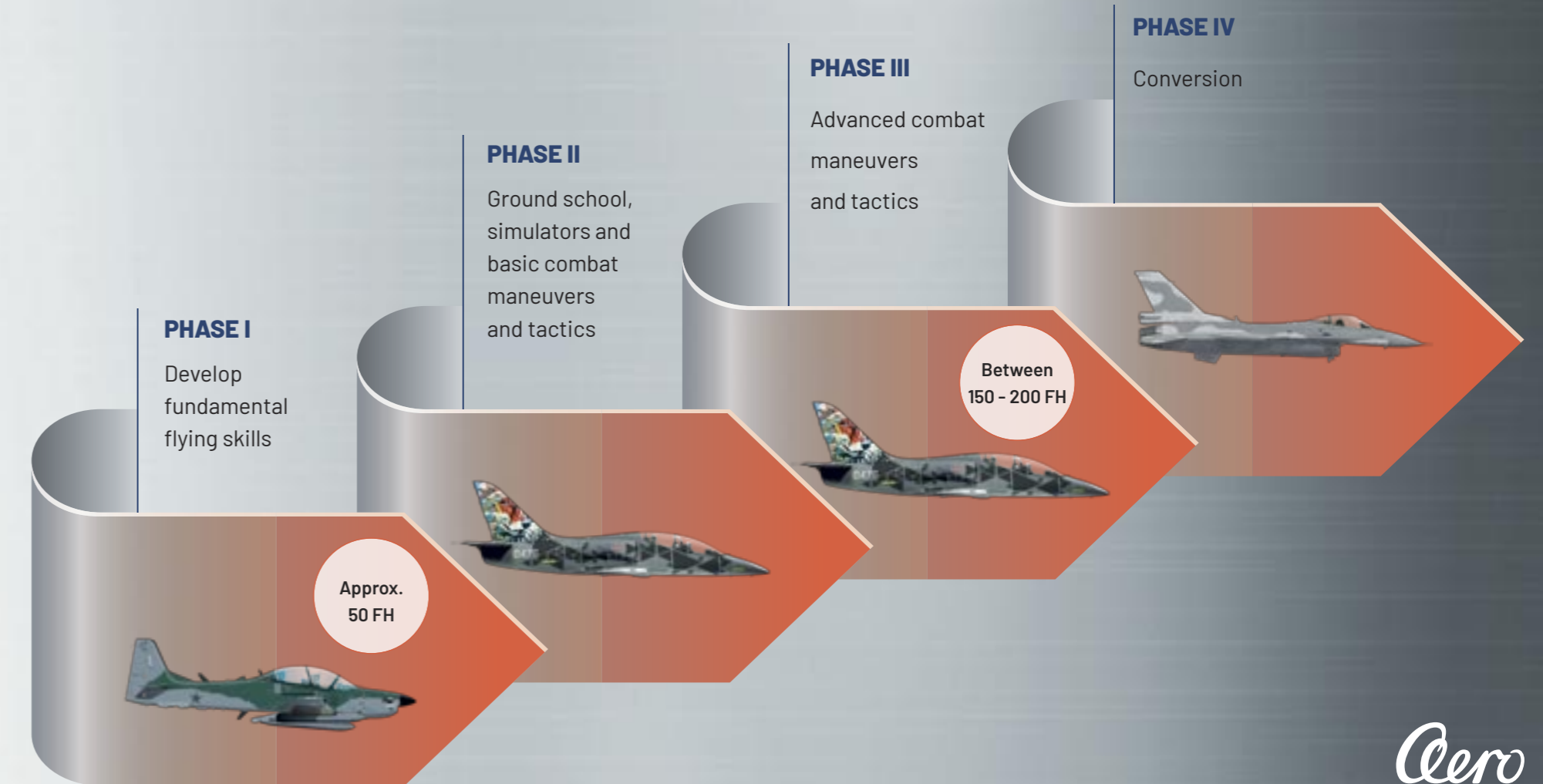


**AERO CERTIFICATIONS**

- Flight training organization
- Approved training organization
- EMAR 147



**EMPOWERING CADETS TO BECOME DEDICATED COMBAT PILOTS AND CONTRIBUTING TO THE DEVELOPMENT OF NATIONAL AIR SUPERIORITY CAPABILITIES.**





**A/A – A/G CAPABILITY**

- Stores management system
- Integration of AESA radar (pod)
- Integration of MX-15 EO/IR pod (laser tracker / designator)
- Integration of 12.7mm DHMP250 gun pod
- A/G rockets 70mm guided/unguided
- S-5 rockets – 57mm
- G/P bombs – OFAB-100
- Mk.81/82 G/P unguided bombs
- BDU33 Practice bombs
- A/A laser guided missiles (AIM9, IRIS-T, others) – optional
- Integration of CHAFF / FLARE dispenser

**WEAPONS AND PAYLOADS – WEST OVERVIEW**

EFT 350 lts



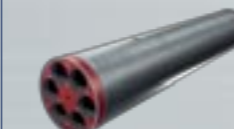
GP Bombs MK 81 (118 kg)



GP Bombs MK 82 (231 kg)



Rocket Launchers LAU 32 (70mm)



Gun Pod HERSTAL FN HMP 250



Training Bombs Dispenser for BDU-33



EO/IR Turret/ Snap-On-Radar



**WEAPONS AND PAYLOADS – EAST OVERVIEW**

EFT 350 lts



GP Bombs OFAB-100-120



Practice Bombs P-50-75



Rocket Launchers UB-16-57UMP (Rockets S-5)



Gun Pod HERSTAL FN HMP 250





## CONDITIONS:

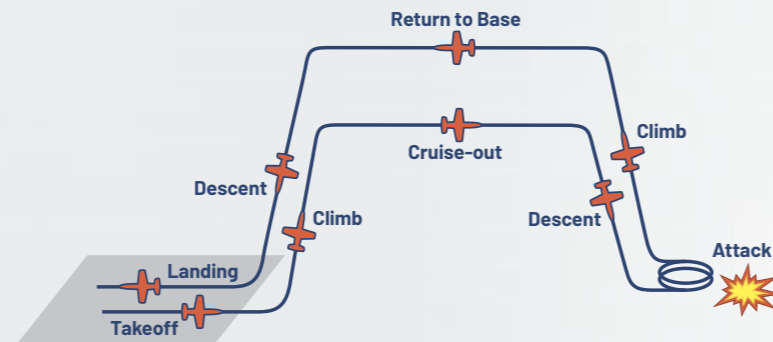
Configuration:	
2 x MK82 (500lb) bombs + 2 x ext. tank 200l	
5x pylon (25kg each)	

## MISSION PHASES:

Climb to FL250:	15.8 min at maximum
Best cruise at FL250:	85.5 min at 0.46M (280KTAS)
Descent to SL:	5.4 min at Flight Idle, 270KCAS
Attack at SL:	8 min at 0.45M (300KTAS) at Max.
Climb to FL250:	9 min at Maximum
Best cruise at FL250:	101.5 min at 0.41M (250KTAS)
Descent to SL & landing:	4.5 min at flight idle, 270KCAS

## H-L-H MISSION PERFORMANCE:

Total mission time:	243 min
Radius of action:	500 nm



## CONDITIONS:

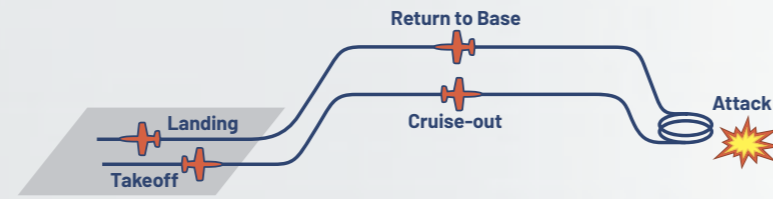
Configuration:	same as Hi-Lo-Hi
----------------	------------------

## MISSION PHASES:

Best cruise at 500ft:	95.7 min at 0.32M (210KTAS)
Attack at SL:	same as Hi-Lo-Hi
Best cruise at 500ft:	101.3 min at 0.30M (190KTAS)

## L-L-L MISSION PERFORMANCE:

Total mission time:	219 min
Radius of action:	334 nm



## CONDITIONS:

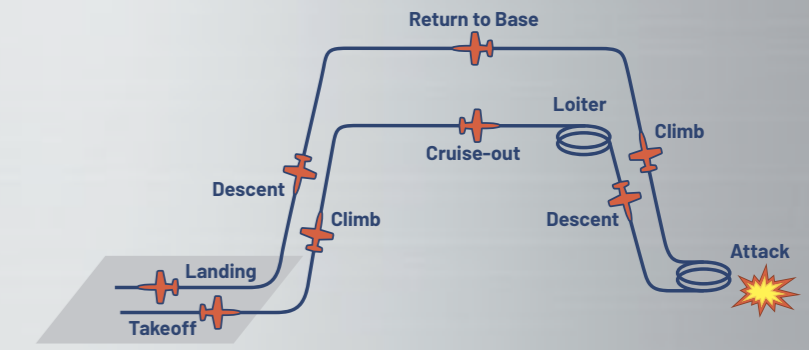
Configuration:	
2x HMP 250 gun pod	
5x pylon (25kg each)	

## MISSION PHASES:

Climb to FL250:	12.6 min at maximum
Best cruise at FL250:	46.7 min at 0.46M (270KTAS)
Descent to SL:	5 min at Flight Idle, 270KCAS
Attack at SL:	12 min at 0.45M (300KTAS) at Max.
Climb to FL250:	9.8min at Maximum
Best cruise at FL250:	52.3min at 0.44M (250KTAS)
Descent to SL & landing:	4.5 min at Flight Idle, 270KCAS

## H-L-H MISSION PERFORMANCE:

Total mission time:	156 min
Radius of action:	289 nm



## L-39 SKYFOX PERFORMS TACTICAL MISSIONS SIGNIFICANTLY BETTER THAN TURBOPROP AIRCRAFT

Significantly greater speed, rate of climb, payload and flight endurance. The L-39 Skyfox can perform missions which turboprops cannot.

Five pylons capable to carry and employ a wide range of sensors and weapons, from practice bombs, unguided bombs, rockets and missiles to laser guided bombs and missiles, surveillance and electronic warfare equipment.

**AIR PATROLLING AND RECONNAISSANCE**

For reconnaissance missions, the aircraft can be equipped with EO/IR SENSOR (MX-15D Wescam or similar type) or others type of mission equipment such as sensors and radar mission pods.

**MISSION POSSIBILITIES OF L-39 SKYFOX**

- Border & maritime patrolling
- EO/IR & radar ISR capabilities
- JTAC & CAS
- Detection and elimination of slow and low flying objects



**NEW SUPPORT MODEL DRIVING HIGHER AIRCRAFT AVAILABILITY AND LOWER OPERATING COST**

- Market leader with the world largest installed base of jet trainers with 60+ customers worldwide
- long-term experience with supporting customers globally
- Our customers get comprehensive, flexible, affordable and turn-key support solutions
- Guaranteed platform support for 30+ years



**Pilot and Ground Personnel Training**



**Performance Based Logistics**



**Tailored Solutions**



**Maintenance Repair and Overhaul Advantage Plan**



**Technical Publications and Service Bulletins**



**Field Service Engineers**



**AERO OFFERS COMPREHENSIVE SOLUTIONS**

- INTEGRATED LOGISTIC SUPPORT (ILS)**  
Spare parts, support equipment, training services, maintenance advantage plan
- GROUND BASED TRAINING SYSTEM (GBTS)**  
Learning, education, training simulators, full mission simulators
- MISSION PLANNING AND DEBRIEFING SYSTEM (MPDS)**

**CURRENT CUSTOMERS L-39 SKYFOX**



**L-39 MODERNIZATION & SUPPORT**



and many more all over the world







AERO Vodochody AEROSPACE a.s.  
U Letiště 374, 250 70 Odolena Voda, Czech Republic

**[www.aero.cz](http://www.aero.cz)**